



LCBEX277-2

LIGHTING CONTROL BOX FOR SIEMENS HEALTHINEERS ARTIS ICONOS PHENO ANGIO/CATH LABS

PRODUCT OVERVIEW

The **LCBEX277-2** is a dedicated lighting control box designed for Siemens angiography and cath lab environments. It provides silent, reliable control of X-ray warning lights and exam room lighting circuits while meeting Siemens-mandated electrical and safety requirements.

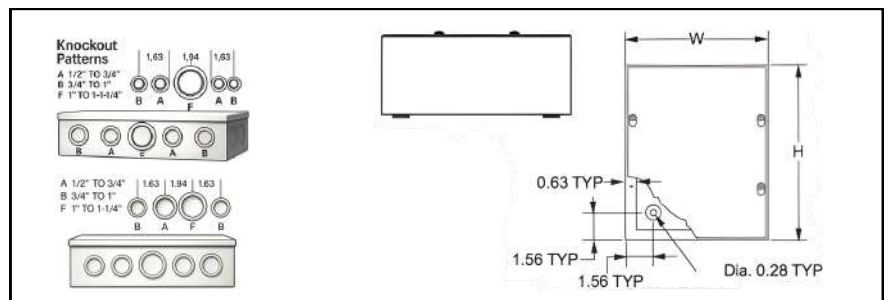
TECHNICAL DATA

Product Model	LCBEX277-2
Enclosure Dimensions	12 in × 12 in × 4 in
Weight	Approx. 11 lb
Input Voltage	100–277 VAC
Power Consumption	< 1 Amp
X-Ray Warning Light Circuit	1 × Discrete Circuit, 100–277 VAC, 15 A max
Exam Room Lighting Circuit	1 × Discrete Circuit, 100–277 VAC, 15 A max (R/F only)
Terminal Wire Range	10–22 AWG
Mounting	4 rear mounting holes for wall or ceiling installation
Operation	Silent electronic control

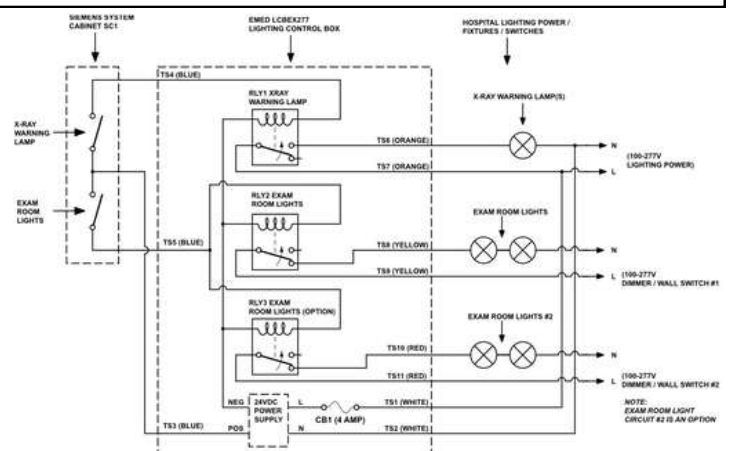


KEY SPECIFICATIONS

- Dedicated X-ray warning light control
- Separate exam room lighting control circuits
- Silent operation for clinical environments
- Guaranteed compatibility with Siemens Angio/Cath X-ray systems
- Includes Siemens-required 24 VDC power supply and freewheeling diodes



EXAMPLE SCHEMATIC: VARIES ACCORDING TO SYSTEM TYPE AND APPLICATION



COMPLIANCE AND CERTIFICATIONS

- UL 50, Type 1 (UL File E6924)
- CSA Certified, Type 1 (CSA File LL66078)
- NEMA / EEMAC Type 1 enclosure

INSTALLATION NOTES

1. Suitable for wall, ceiling, or approved mounting substrate
2. Accepts lighting voltages from 100–277 VAC
3. Freewheeling diodes included as required by Siemens
4. Designed for integration per Siemens installation specifications

** Each LCB-XRAY unit is configured for a specific Siemens system.
Always refer to the project-specific schematic supplied with the unit.

Warranty: 1-year warranty on all parts



For More Information
www.xraylightingcontrol.com

